

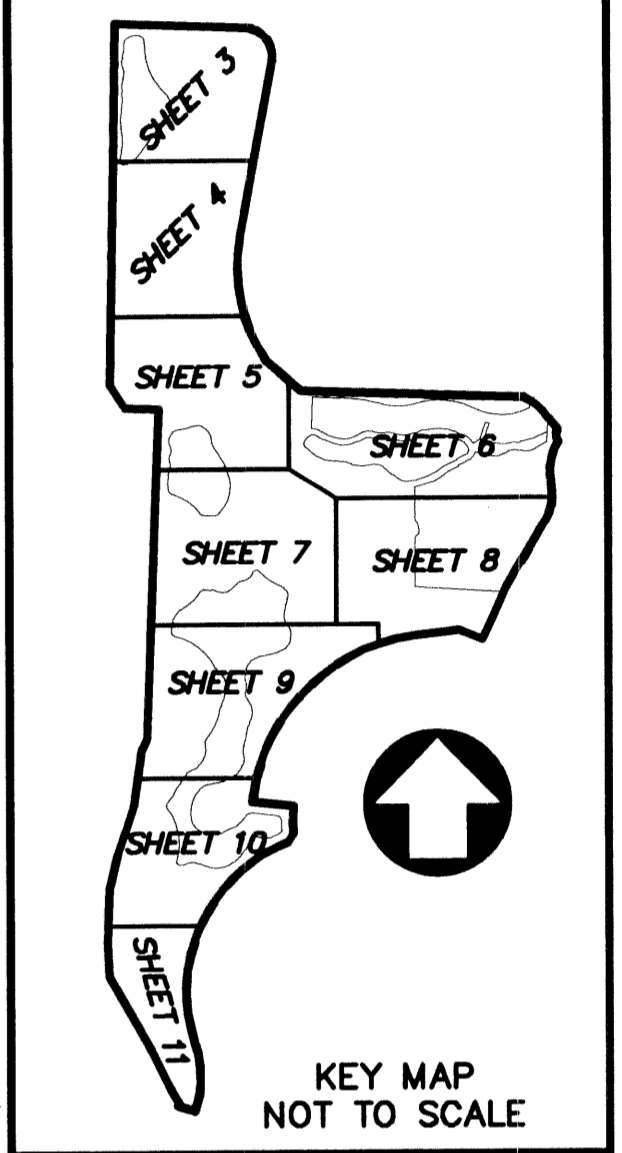
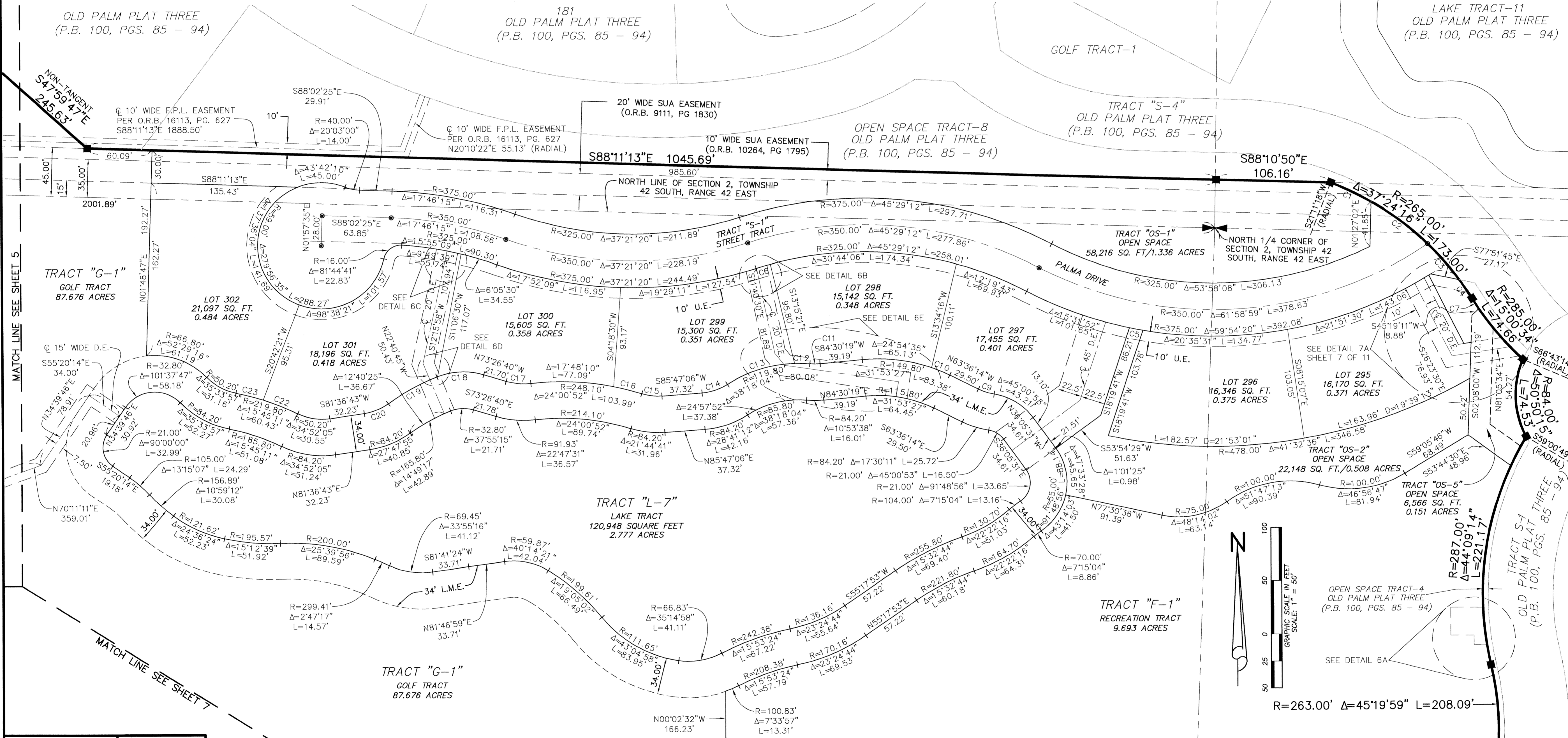
OLD PALM PLAT FIVE

A REPLAT OF A PORTION OF PARCEL 1, OLD PALM PLAT 1 AS RECORDED IN PLAT BOOK 96, PAGES 31 THROUGH 34, OF THE PUBLIC RECORDS OF PALM BEACH COUNTY, FLORIDA SITUATE IN THE SOUTH ONE-HALF OF SECTION 35, TOWNSHIP 41 SOUTH, RANGE 42 EAST, AND SECTION 2, TOWNSHIP 42 SOUTH, RANGE 42 EAST, CITY OF PALM BEACH GARDENS, PALM BEACH COUNTY, FLORIDA
 FEBRUARY, 2004
 SHEET 6 OF 11

62

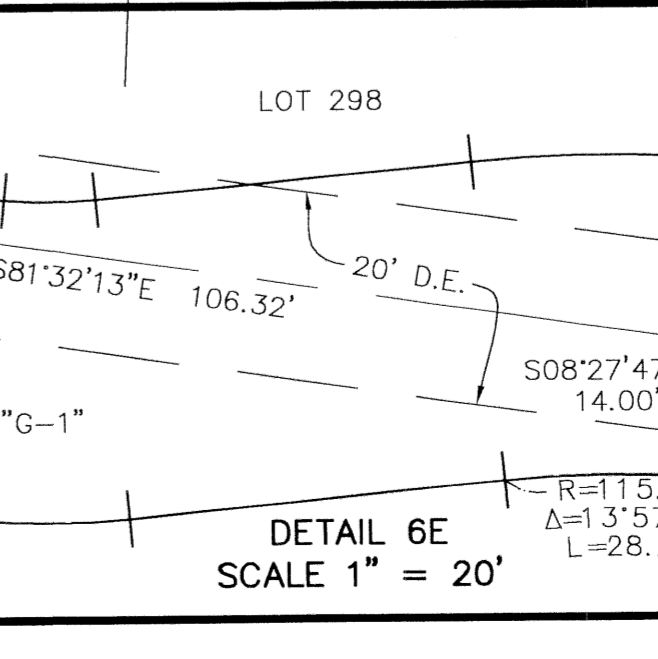
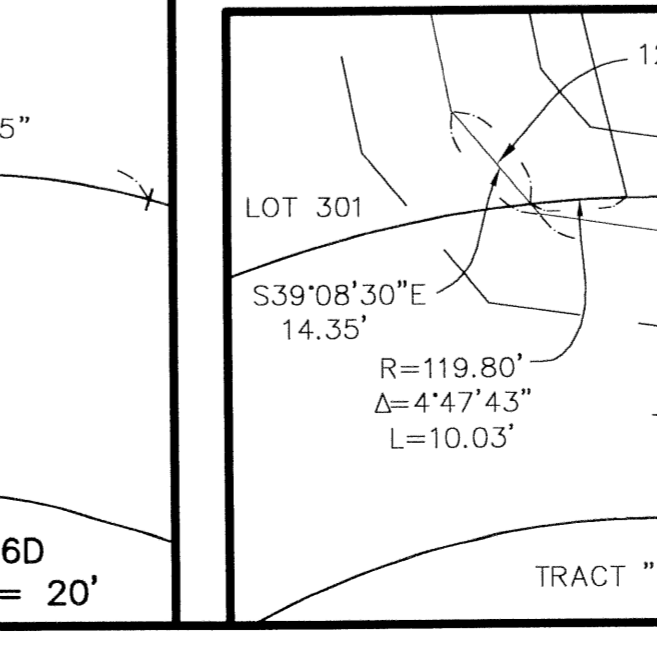
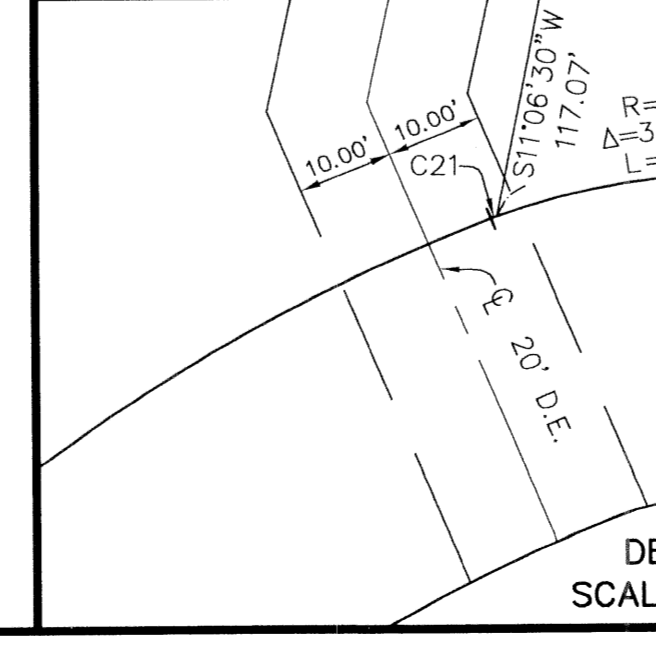
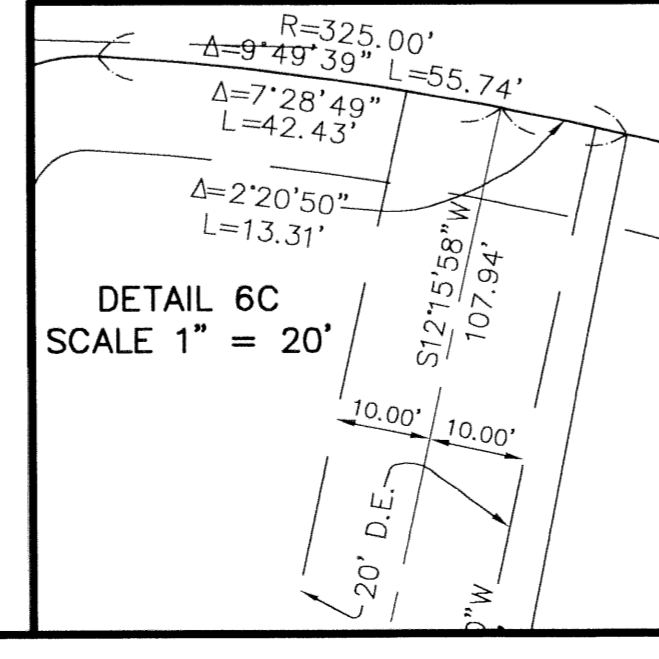
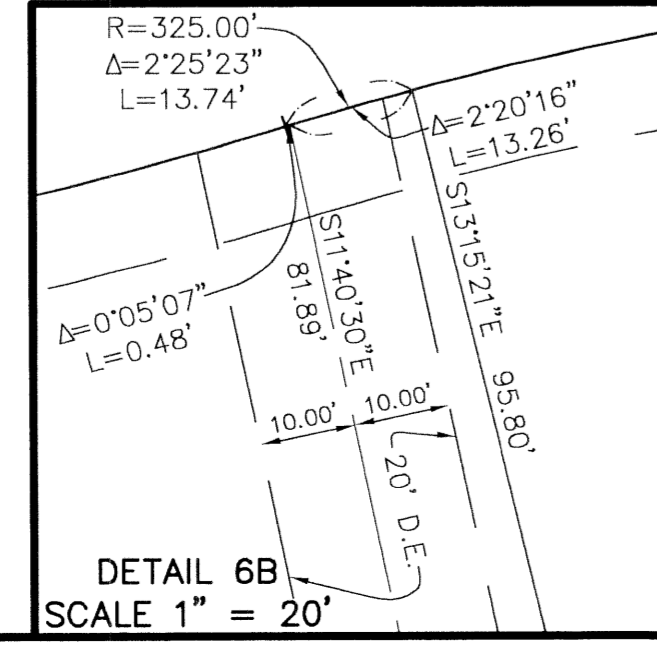
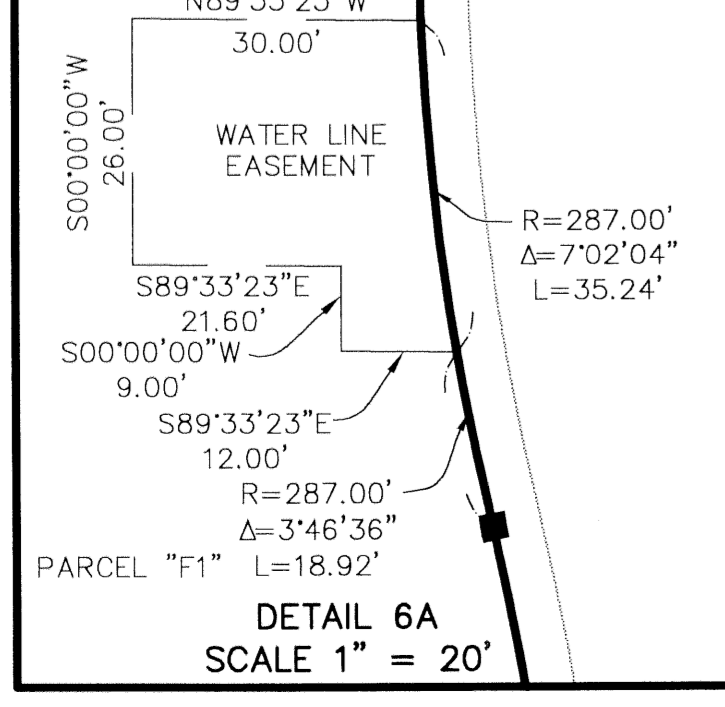
STATE OF FLORIDA
 COUNTY OF PALM BEACH
 THIS PLAT WAS FILED FOR RECORD AT _____ M.
 THIS _____ DAY OF _____
 A.D. 2004 AND DULY RECORDED IN PLAT BOOK _____ ON PAGES _____ THROUGH _____
 DOROTHY H. WILKEN
 CLERK CIRCUIT COURT
 BY: _____
 DEPUTY CLERK

CURVE TABLE					
CURVE	RADIUS	DELTA/CENTRAL ANGLE	ARC LENGTH	CHORD BEARING	CHORD DISTANCE
C1	265.00'	8°57'14"	41.41'	N64°20'05"W	41.37'
C2	265.00'	14°13'55"	65.82'	N52°44'31"W	65.65'
C3	265.00'	9°40'21"	44.74'	N40°47'23"W	44.68'
C4	265.00'	4°32'47"	21.03'	N33°40'49"W	21.02'
C5	375.00'	1°55'27"	12.59'	S78°37'52"E	12.59'
C6	325.00'	2°25'23"	13.74'	S73°35'12"W	13.74'
C7	285.00'	2°18'02"	11.44'	S32°33'27"E	11.44'
C9	50.20'	17°30'11"	15.34'	S72°21'19"E	15.28'
C10	149.80'	6°58'52"	18.25'	N67°05'40"W	18.24'
C11	50.20'	10°53'38"	9.54'	N89°57'08"E	9.53'
C12	119.80'	6°45'34"	14.13'	N87°58'50"W	14.13'
C13	119.80'	31°32'29"	65.95'	S72°52'09"W	65.12'
C14	50.20'	28°41'12"	25.13'	N71°26'30"E	24.87'
C15	50.20'	21°44'41"	19.05'	S63°20'33"E	18.94'
C16	248.10'	6°12'42"	26.90'	N75°34'34"W	26.88'
C17	57.93'	22°43'39"	22.98'	S85°07'15"E	22.83'
C18	66.80'	37°55'15"	44.21'	S87°35'43"W	43.41'
C19	199.80'	14°49'17"	51.68'	S61°13'27"W	51.54'
C20	50.20'	27°47'55"	24.36'	N67°42'45"E	24.12'
C21	66.80'	0°31'36"	0.61'	S68°53'53"W	0.61'
C22	219.80'	8°56'49"	34.32'	N67°59'37"W	34.29'
C23	219.80'	6°48'22"	26.11'	N75°52'12"W	26.09'



- LEGEND:
- L = ARC LENGTH
 - Δ = CENTERLINE
 - Δ = CENTRAL/DELTA ANGLE
 - Δ E. = DRAINAGE EASEMENT
 - FND = FOUND
 - F.P.L. = FLORIDA POWER & LIGHT
 - L.M.E. = LAKE MAINTENANCE EASEMENT
 - LB = LICENSE BUSINESS
 - O.R.B. = OFFICIAL RECORD BOOK
 - PG. = PAGE
 - PGS. = PAGES
 - P.B. = PLAT BOOK
 - P.B. = POINT OF BEGINNING
 - R = RADIUS
 - SQ.FT. = SQUARE FEET
 - U.E. = UTILITY EASEMENT
 - ⊙ = PERMANENT CONTROL POINT (P.C.P.) "LB#7055"
 - = SET PERMANENT REFERENCE MONUMENT (P.R.M.) "LB#7055" UNLESS OTHERWISE NOTED
 - SUA = SEACOAST UTILITY AUTHORITY
 - WSE = WATERLINE & SEWERLINE EASEMENT

NOTICE: THIS PLAT, AS RECORDED IN ITS GRAPHIC FORM, IS THE OFFICIAL DEPICTION OF THE SUBDIVIDED LANDS DESCRIBED HEREIN AND WILL IN NO CIRCUMSTANCES BE SUPPLANTED IN AUTHORITY BY ANY OTHER GRAPHIC OR DIGITAL FORM OF THE PLAT. THERE MAY BE ADDITIONAL RESTRICTIONS THAT ARE NOT RECORDED ON THIS PLAT THAT MAY BE FOUND IN THE PUBLIC RECORDS OF THIS COUNTY.



Wantman Group, Inc.
 Engineering ♦ Surveying ♦ Mapping
 901 NORTHPOINT PARKWAY, SUITE 204
 WEST PALM BEACH, FL 33407
 (561) 687-2220 phone (561) 687-1110 fax
 CERT No. 6091 - LB No. 7055
 THIS INSTRUMENT WAS PREPARED BY MARTIN J. SHATTO, P.S.M.
 PROFESSIONAL SURVEYOR AND MAPPER, REGISTRATION NO. 5219
 IN THE OFFICES OF WANTMAN GROUP, INC.